

MORNING

SESSION 1 : IDENTIFICATION OF INTRA-COMMUNITY PROGRAMMES FOR EQUALITY BODIES

- Presentation of the Rights, Equality and Citizenship Programme
- Identification and presentation of other appropriate programmes
- Identification of the relevant managing authorities of each programmes

SESSION 2 : INTRODUCTION TO STRUCTURAL FUNDS (FRANCE AND BULGARIA)

- Presentation of the priorities of the programmes and cooperation
- Identification of the relevant managing authority
- Essential principles and rules in the selection of the projects

SESSION 3 : PARTNERSHIP AND APPLICATION METHODOLOGY

- Building a strong partners' network
- Essential principles, participation rules and trends of intra-community programmes

AFTERNOON

SESSION 4 : THE LOGICAL FRAMEWORK APPROACH

- Introduction to the Logical Framework approach
- **WORKSHOP** - Preparation of a Logical Framework
- Conclusion of the workshop

SESSION 5 : BUDGETING RULES

- Budgeting rules specific to the identified programmes – Formalisation of the budget form
- **WORKSHOP** - Preparation of a budget
- Conclusion of the workshop

Roundtable – Evaluation of the first day by participants

PERTINENT PROGRAMMES FOR EQUALITY BODIES

Intra-community programmes

Rights, equality and citizenship programme

EaSI – PROGRESS

ERASMUS +

Other programmes

**European instrument for
Democracy and Human
Rights**

**Human Rights, Education and
Youth Programme**

**Structural funds – ex France,
Bulgaria**

PERTINENT PROGRAMMES FOR EQUALITY BODIES

Intra-community programmes

Rights, equality and citizenship programme

EaSI – PROGRESS

ERASMUS +

Other programmes

European instrument for Democracy and Human Rights

Human Rights, Education and Youth Programme

Structural funds – ex France, Bulgaria

RIGHTS, EQUALITY AND CITIZENSHIP PROGRAMME

Managing Authority : DG JUSTICE

Global objective : Contributing to the further development of equality and the promotion of the rights of people.

Priorities :

- Promote non-discrimination, data protection, consumer rights
- Combat racism, xenophobia, homophobia and other forms of intolerance
- Promote rights of persons with disabilities
- Promote equality between women and men and gender mainstreaming
- Prevent violence against children, young people, women and other groups at risk



439 million €



RIGHTS, EQUALITY AND CITIZENSHIP PROGRAMME



Types of funded actions :

- Training activities (staff exchanges, workshops, development of training modules,...)
- Mutual learning, cooperation activities, exchange of good practices, peer reviews, development of ICT tools...
- Awareness-raising activities, dissemination, conferences,...
- Support for main actors (key European NGOs and networks, Member States' authorities implementing Union law,...)
- Analytical activities (studies, data collection, development of common methodologies, indicators, surveys, preparation of guides...)

RIGHTS, EQUALITY AND CITIZENSHIP PROGRAMME



Application forms : 3 mandatory templates for the grant application –

Annex 1: Project Description and Implementation Form

The template must be uploaded in the original Word format

Annex 2 : Budget

The template must be uploaded in the original Excel format

Annex 3 : Partner/Associate Partner Declaration

All the sections of the template shall be completed , signed and dated by the authorised signatory of the partner organisation and scanned. The Application package should contain one declaration for each partner.



SPECIFICITIES OF THE PROGRAMME

- ❖ The project must be transnational and must be submitted by a partnership of eligible organisations.
- ❖ Projects must not have started prior to the date of submission of the grant application.
- ❖ Most of the calls provides the maximum of the funding allocation
- ❖ Applicants and partners must have stable and sufficient sources of funding to maintain their activity throughout the period for which the grant is awarded
- ❖ The applicant must present its balance sheets and profit and loss accounts for the last two available years (not applicable for public bodies)
- ❖ The applicant and the partners must have sufficient operational and professional capacities to implement the activities for which co-funding is requested.

→ LINKS

1. http://ec.europa.eu/justice/grants1/programmes-2014-2020/rec/index_en.htm
2. <http://eur-lex.europa.eu/legal-content/EN/TXT/?qid=1397223391719&uri=CELEX:32013R1381>
3. http://ec.europa.eu/justice/grants1/open-calls/index_en.htm
4. <http://ec.europa.eu/justice/grants/results/daphne-toolkit/en/browse-all-projects>

→ CONTACTS

Paraskevi MICHOU – Director – DG justice
Tel: +32 2 29 53 4 358

Renatas MAZEIKA – Head of Unit Unit A.4 : Programme management
Tel: +32 2 29 62 152
Email : EC-REC-CALLS@ec.europa.eu

POSSIBILITIES ALSO THROUGH CALLS FOR TENDER !!!

PERTINENT PROGRAMMES FOR EQUALITY BODIES

Intra-community programmes

Rights, equality and citizenship programme

EaSI – PROGRESS

ERASMUS +

Other programmes

European instrument for Democracy and Human Rights

Human Rights, Education and Youth Programme

Structural funds – ex France, Bulgaria

EASI - PROGRESS

Managing Authority : DG EMPLOYMENT

Global objective :

The PROGRESS axis of EaSI helps the EU and its countries to improve policies in three thematic sections:

1. employment, in particular to fight youth unemployment;
2. social protection, social inclusion and the reduction and prevention of poverty;
3. working conditions.

Budget : 919 million €

61% of the total EaSI budget will be allocated to the PROGRESS axis. Between 15 and 20% of this quota will be dedicated to social policy experimentation, with the aim to further develop its potential for employment and social innovation.



EASI - PROGRESS

Types of funded actions:

- Develop and disseminate high-quality comparative analytical knowledge.
- Facilitate effective and inclusive information-sharing, mutual learning and dialogue.
- Provide financial support to test social and labour market policy innovations.
- Provide organisations with financial support to increase their capacity to develop, promote and support the implementation of EU instruments and policies.



EASI - PROGRESS



Eligible countries :

EU countries;

EEA countries, in accordance with the EEA Agreement, and EFTA countries;

EU candidate countries and potential candidate countries, in line with the framework agreements concluded with them.

The PROGRESS axis of EaSI is open to all public and/or private bodies, actors and institutions

It can support cooperation with international organisations, and in particular with the Council of Europe, the OECD, the ILO, with other United Nations bodies and with the World Bank.

EASI - PROGRESS



Application forms : through call for proposal published on the website of the DG employment and social affairs.

➔ Online submission on the indicated website :

<https://webgate.ec.europa.eu/swim/external/protected/editSubvention.do>

Example : Mobility experience for professionals

Deadline : 16/10/2015

Specificities of the call :

- a) pay particular attention to vulnerable groups, such as young people;
- b) promote equality between women and men;
- c) combat discrimination based on sex, racial or ethnic origin, religion or belief, disability, age or sexual orientation;
- d) promote a high-level of quality and sustainable employment, guarantee adequate and decent social protection, combat long-term unemployment and fight against poverty and social exclusion

EASI – PROGRESS - Other financing possibilities :



Call for tenders :

Organisations from eligible countries can participate to call for tenders in the area of employment, social affairs and inclusion.

Example : Study to collect updated information for a limited number of substances to analyse the health, socio-economic and environmental impacts on workers ...

Deadline : 10/09/2015

The maximum amount of the contract is € 300,000

The tender guidelines gives information regarding the different tasks to be undergone, the deliverables and the budget available.

LINK: <http://ted.europa.eu>

EASI – PROGRESS - Other financing possibilities :



Call for interest :

The European Commission is looking for independent experts with expertise in the policy areas of employment, social affairs and inclusion

Individuals can apply to these call for interest. Application is done on-line through the website

<https://webgate.ec.europa.eu/swim/external/experts/protected/curriculum/edit.action>

Information to be provides :

Curriculum vitae – fields of expertise– personal information – qualification

If selected, the contract is due for a maximum of 5 years.

→ LINKS

1. <https://webgate.ec.europa.eu/swim/external/protected/editSubvention.do>
2. <http://ec.europa.eu/social/main.jsp?catId=1081>
3. <file://serveur-ibm/travail/Travail1/2015%20FORMATION/FSM/EQUINET/KE-04-14-701-3A-N.pdf>
4. <http://ec.europa.eu/social/main.jsp?catId=1191&langId=en>

→ CONTACTS

Stefan OLSSON – Head of Unit
Unit D.2 : Social inclusion and poverty reduction
Tel: +32 22953569

Jacob RALF – Head of Unit
Unité D.3 : Social Protection and Activation Systems
Tel : +32 229-90483/87553

PERTINENT PROGRAMMES FOR EQUALITY BODIES

Intra-community programmes

Rights, equality and citizenship programme

EaSI – PROGRESS

ERASMUS +

Other programmes

European instrument for Democracy and Human Rights

Human Rights, Education and Youth Programme

Structural funds – ex France, Bulgaria

ERASMUS +



Managing Authority :

DG EDUCATION AND CULTURE and the EDUCATION, AUDIOVISUAL AND CULTURE EXECUTIVE AGENCY

Global objective :

The new Erasmus+ programme aims to support actions in the fields of Education, Training, Youth and Sport for the period 2014-2020.

The Education, training and youth strand is composed of 3 « Key actions » :

- ⇒ Key Action 1: Transnational mobility of higher education and vocational training students and staff
- ⇒ Key Action 2: Cross border partnerships among education institutions, including companies (SMEs, corporations)
- ⇒ Key Action 3: The policy dialogue with relevant European stakeholders

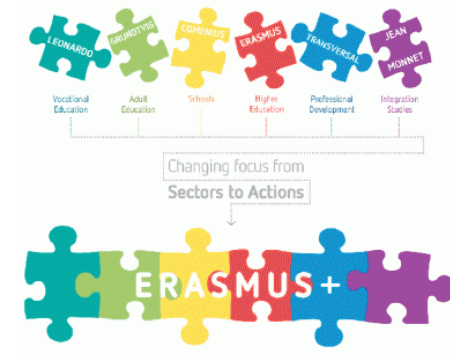
ERASMUS +

Types of actions funded for Key Action 2:

1. Capacity building in the field of youth
2. Strategic partnerships in the field of education, training and youth

Capacity building in the field of youth :

- To improve the quality and recognition of youth work, non-formal learning and enhance their synergies with other education systems, the labour market and society
- To promote transnational non-formal learning mobility between Programme and Partner Countries targeting young and vulnerable people with fewer opportunities,



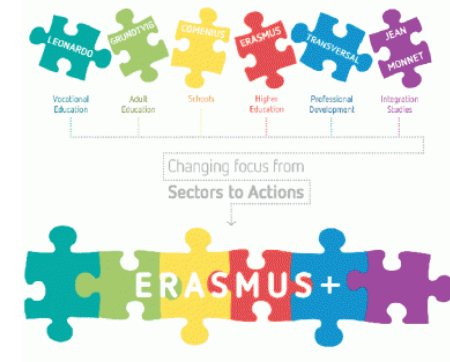
ERASMUS +

Types of actions funded for Key Action 2:

1. Capacity building in the field of youth
2. Strategic partnerships in the field of education, training and youth

Strategic partnerships in the field of education, training and youth

- Developing new approaches to strengthen the education and training paths of prospective and practicing educators/youth workers
- Supporting innovative projects aimed to reduce disparities in learning outcomes affecting learners from disadvantaged backgrounds/with fewer opportunities



ERASMUS +

Among financed actions for capacity building in the field of youth :

- Activities of cooperation between regional authorities to promote the development of education, training and youth systems and their integration in actions of local and regional development
- Activities to support learners with disabilities/special needs to complete education cycles and facilitate their transition into the labour market, including by combating segregation and discrimination in education for marginalised communities
- Activities to better prepare and deploy the education and training professionals for equity, diversity and inclusion challenges in the learning environment

Budget 2015- 302 millions €

ERASMUS +



Eligible countries :

ERASMUS + programme distinguishes between eligible countries and partner countries. Only eligible countries can be coordinator.

Organisation of the programme:

The actions of the Erasmus + programme are divided into decentralised actions and centralised actions :

- *The decentralised actions are managed in each programme country by National Agencies*
http://ec.europa.eu/education/tools/national_agencies_en.htm
- *The centralised actions are managed at a European level by the Education, Audiovisual and Culture Executive Agency (EACEA) located in Brussels.*
http://eacea.ec.europa.eu/erasmus-plus_en

ERASMUS +



Application forms :

➔ Online submission on the indicated website :

<https://webgate.ec.europa.eu/swim/external/protected/editSubvention.do>

Annex 1: Project Description and Implementation Form

The template must be uploaded in the original Word format

Annex 2 : **Budget**

The template must be uploaded in the original Excel format

Annex 3: **Declaration of honour**

The template needs to be fill in and signed and uploaded on the submission platform.

Publication of the Annual work programme 2016 in 3rd Quarter 2015

OPEN call for tenders :

Study on the Contribution of Sport to the Employability of Young People in the Context of the Europe 2020 Strategy

The aim of this study is to examine youth work quality systems in EU Member States .The outcome will be a handbook that gives guidance and support on basic quality principles and on the design and implementation of youth quality approach.

http://eacea.ec.europa.eu/about-eacea/calls-for-tenders/study-contribution-sport-employability-young-people-in-context-europe-2020-strategy_en

Deadline : 12/10/2015

The maximum amount of the contract is € 200 000



SPECIFICITIES OF THE PROGRAMME

- ❖ Each organisation involved in the application must register in the Participant Portal and receive a Participant Identification Code (PIC).
- ❖ The applicant needs to prove their financial capacity for grants exceeding 60 000 EUR – document to be uploaded on the participant portal.
- ❖ Through the selection criteria, the National or Executive Agency assesses the applicant's financial and operational capacity to complete the proposed project.
- ❖ The applicant has the necessary professional competencies and qualifications to carry out the proposed project
- ❖ The electronic form must be completed in one of the official languages spoken in Programme Countries (or one of the EU official languages.)

→ LINKS

1. http://eacea.ec.europa.eu/erasmus-plus/actions_en
2. http://ec.europa.eu/programmes/erasmus-plus/discover/guide/index_en.htm
3. <http://ted.europa.eu/TED/main/HomePage.do>
4. http://ec.europa.eu/education/tools/national_agencies_en.htm

→ CONTACTS

Georges BINGEN – Head of Unit

Unit A.6 - Erasmus + : Sport, Youth and EU Aid Volunteers (EACEA)

Tel: +32 229-54866

Erasmus Plus National Agency - France

Bordeaux Agency for Education strand : 05 56 00 94 00

INJEP for the Youth strand: : 01 70 98 93 70

Erasmus Plus National Agency - Bulgaria:

Human Resource Development Centre (HRDC): 00359 2 91 550 10

PERTINENT PROGRAMMES FOR EQUALITY BODIES

Intra-community programmes

Rights, equality and citizenship programme

EaSI – PROGRESS

ERASMUS +

Other programmes

European instrument for Democracy and Human Rights

Human Rights, Education and Youth Programme

Structural funds – ex France, Bulgaria

PERTINENT PROGRAMMES FOR EQUALITY BODIES

Intra-community programmes

Rights, equality and citizenship programme

EaSI – PROGRESS

ERASMUS +

Other programmes

**European instrument for
Democracy and Human
Rights**

Human Rights, Education and Youth Programme

Structural funds – ex France, Bulgaria

EUROPEAN INSTRUMENT FOR DEMOCRACY AND HUMAN RIGHTS

Objective:

➔ To strengthen international and regional frameworks for the promotion and protection of human rights, justice, the rule of law and democracy in accordance with Union policy priorities

Priorities:

- Support to human rights and human rights defenders in situations where they are most at risk
- Support to other priorities of the Union in the field of human rights
- Support to democracy
- Support to targeted key actors and processes, including international and regional human rights instruments and mechanisms
- Promotion and protection of human rights and fundamental freedoms = support for, protection of, and assistance to human rights defenders

PERTINENT PROGRAMMES FOR EQUALITY BODIES

Intra-community programmes

Rights, equality and citizenship
programme

EaSI – PROGRESS

ERASMUS +

Other programmes

European instrument for Democracy
and Human Rights

Human Rights, Education and Youth
Programme

Structural funds – ex France,
Bulgaria

PERTINENT PROGRAMMES FOR EQUALITY BODIES

Intra-community programmes

Rights, equality and citizenship programme

EaSI – PROGRESS

ERASMUS +

CONSUMER PROGRAMME

Other programmes

European instrument for Democracy and Human Rights

Human Rights, Education and Youth Programme

Structural funds – ex France, Bulgaria

HUMAN RIGHTS, EDUCATION AND YOUTH PROGRAMME



GLOBAL OBJECTIVE:

- Human rights and democracy: youth policy and youth work promoting the core values of the Council
- Youth policy and youth work promoting intercultural dialogue “Living together in diverse societies“
- Social inclusion of young people
- Policy approaches and instruments benefiting young people and children

HUMAN RIGHTS, EDUCATION AND YOUTH PROGRAMME



Financed actions

- Pilot projects run by NGOs and youth local groups to undertake actions related to human rights education with young people
- National and regional training courses in human rights education

Application procedures :

Different procedure : on-line subscription to be a partner in the programme and participate in the different actions implemented by the programme.

<http://www.coe.int/t/dg4/youth/>

PERTINENT PROGRAMMES FOR EQUALITY BODIES

Intra-community programmes

Rights, equality and citizenship programme

EaSI – PROGRESS

ERASMUS +

CONSUMER PROGRAMME

Other programmes

European instrument for Democracy and Human Rights

Civil society organisation and local Authorities

Human Rights, Education and Youth Programme

Structural funds – ex France, Bulgaria

Structural funds

Managing Authority :

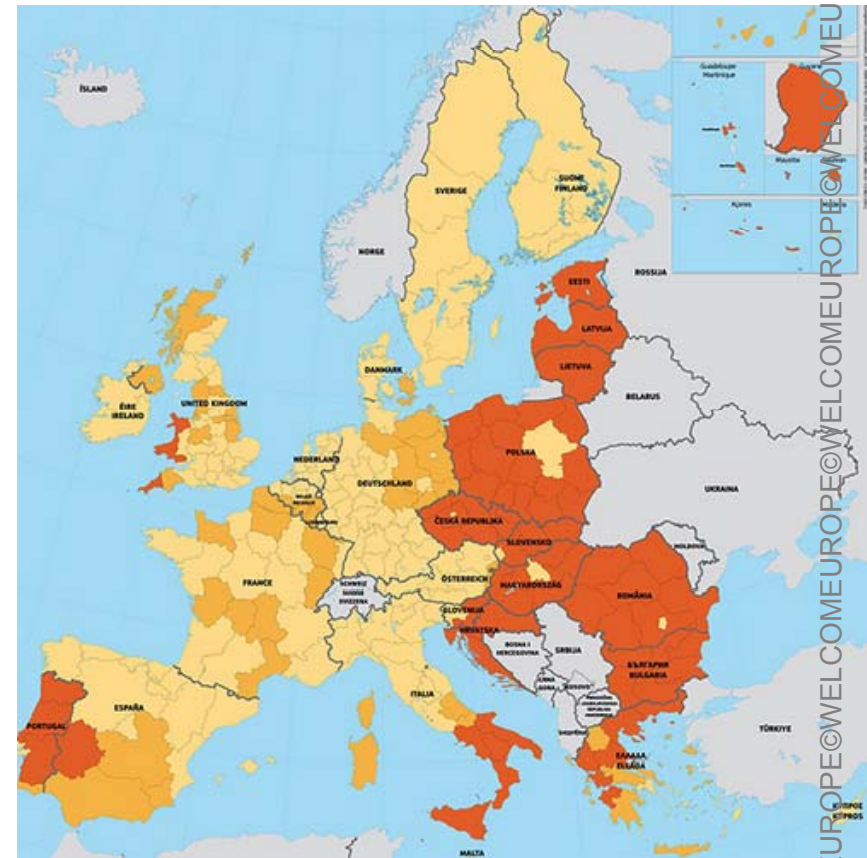
Depending on the Member state organisation. It can be managed either by national authorities or regional/local authorities

It consists of 2 funds :

1. ERDF (Equipment)
2. ESF (Human resources)

Global objective :

Regional Policy targets all regions and cities in the European Union in order to support job creation, business competitiveness, economic growth, sustainable development, and improve citizens' quality of life..



ESF in FRANCE

Allocated budget (2.893 billion €):

65 % of ESF budget is managed on national ground

National priorities 2014-2020:

- Assisting unemployed and inactive persons, including young people in unemployment and those young people who are most disconnected from the labour - **454 million € allocated budget**
- Securing career pathways by means of forward planning of jobs and skills, training for low-skilled workers, women and older people, training for workers made redundant, and encouraging businesses to commit to equal pay and opportunities - **707 million € allocated budget**
- Reducing poverty, helping vulnerable people and promoting inclusion - **1.634 million €**



ESF in FRANCE

Allocated budget (2.893 billion €):

35% of ESF budget is managed by the regional authorities

Regional priorities 2014-2020:

- Giving access and providing “training” to people in need
- Investing in lifelong skills, education, and training at the regional ground

Organisation of the programme:

The priorities and actions to be implemented are written in an operational programme and validated by the European Commission.

Both national and regional ESF operate through call for proposals. However in some region, the managing authority will allow on-going submission.

On-line submission through official participant portal



ESF in BULGARIA

Managing Authority :

Administration of the Council of Ministers.

Ministry of Labour and Social Policy

Ministry of Science and Education - General Directorate
Structural Funds and International Educational
Programmes

3 operational programmes of ESF :

The Operational programme « Good Governance » :

- **Modernising Public Administration** : to reduce administrative and regulatory burden on citizens and business - 118 million €
- **Improving the quality, independence and efficiency of the judiciary** : to increase transparency and accelerate judicial proceedings through structural, procedural and organisational reforms in the judiciary – 30 million €



The Operational programme “Human Resources Development”:

- Employment will be boosted by projects targeting better access to jobs and helping long-term unemployed and young people, particularly those not in employment, education or training up
- Social inclusion measures. These will target groups such as the young and older members of society, those with disabilities, and minorities such as Roma. Social entrepreneurship and access to vocational training will be promoted, as will better access to health and social care services - 286 million €
- Improvements to public services that deal with employment and social or health-related matters. Funding for transnational exchanges of good practice will help to achieve this.



The Operational Programme “Science and Education for Smart Growth” :

- **Strengthening research and innovation** : developing centres of excellence and centres of competence, as hubs of high-quality research and innovation in the areas defined in the Research and Innovation Strategy for Smart Specialisation – 243 million €
- **Enhancing education and social inclusion at all educational levels:**
 - improving key competences of students and children, including through innovative teaching methods. It will promote the quality of higher education with a view of obtaining better outcomes on the labour market, as well as the modernisation of vocational education and life-long learning - 220 million €
 - integration of children at risk of exclusion from education, on account of belonging to marginalised ethnic groups or to groups with specific educational needs - 110 million €





ИНФОРМАЦИОННА СИСТЕМА
ЗА УПРАВЛЕНИЕ И НАБЛЮДЕНИЕ
НА СРЕДСТВАТА ОТ ЕС В
БЪЛГАРИЯ 2020



ЕДНА ПОСОКА
МНОГО ВЪЗМОЖНОСТИ
2014 - 2020

Organisation of the programme:

1. The priorities and actions to be implemented are written in an operational programme and validated by the European Commission.
2. The Managing authorities operate through call for proposals. However there are also possibilities to receive direct awards.
3. On-line submission through official participants portal - <https://eumis2020.government.bg/>

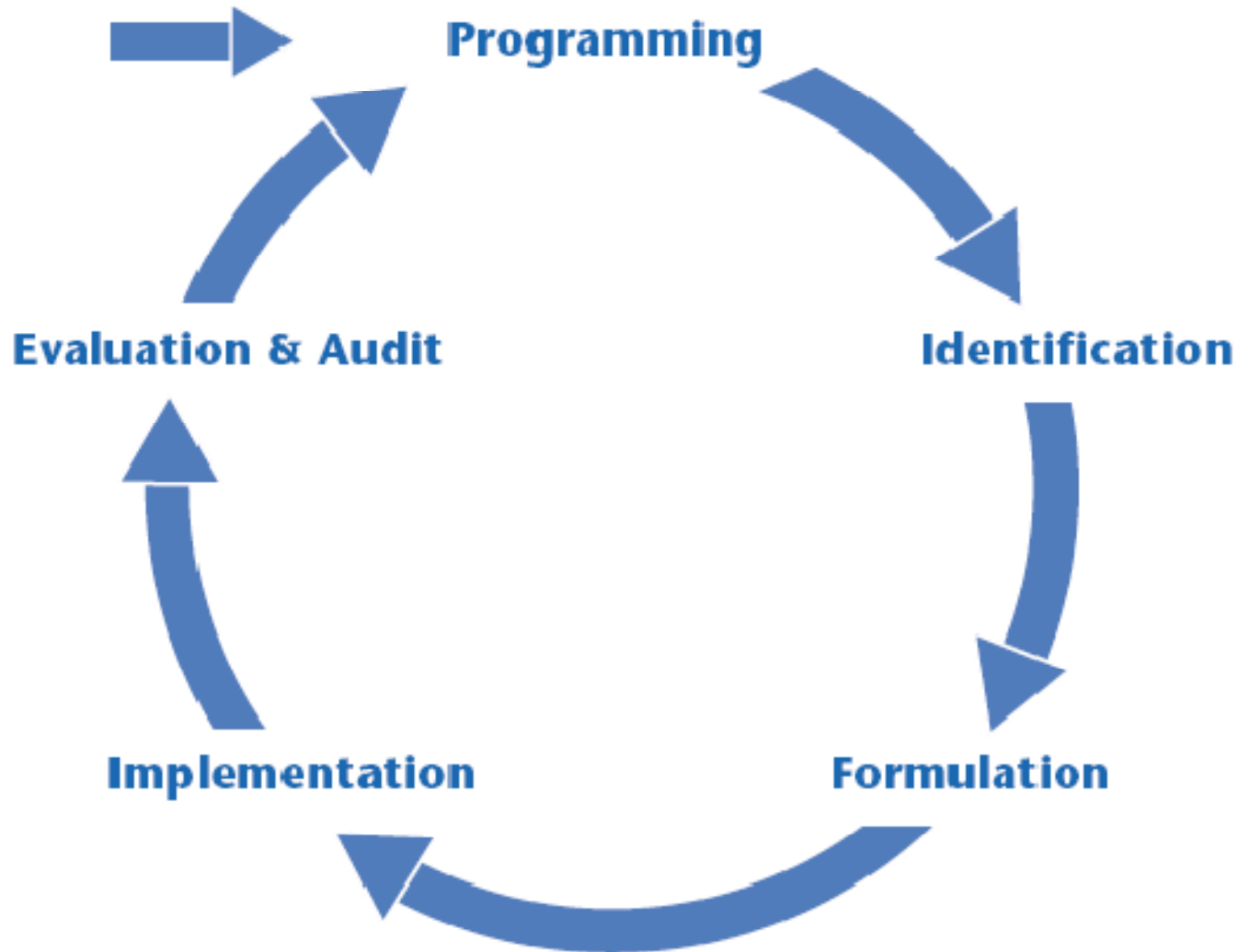
→ LINKS

1. <http://www.eufunds.bg/>
2. <http://www.eufunds.bg/bg/page/58?status=1&programme>
3. <http://www.ophrd.government.bg>
4. <https://eumis2020.government.bg/bg/a6167455>

→ CONTACTS

Siana Stoyanova - HEAD OF HRD Operational programme Authority
s.stoyanova@mlsp.government.bg

Project Cycle Management

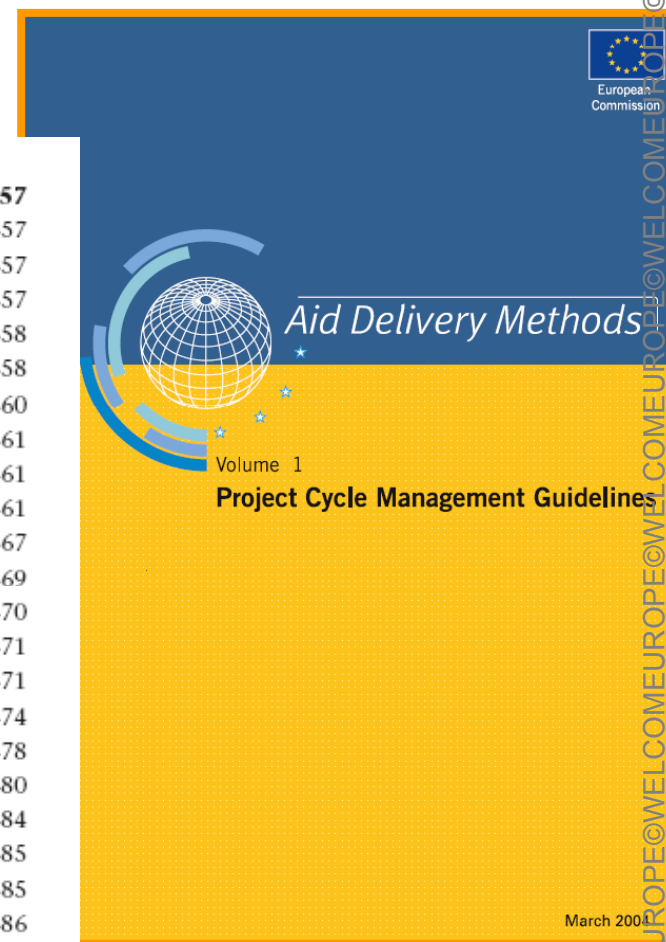


THE LOGICAL FRAMEWORK MATRIX

http://ec.europa.eu/development/icenter/repository/pcm_guidelines_2004_a4.pdf

PART 2

5	THE LOGICAL FRAMEWORK APPROACH	57
5.1	OVERVIEW OF THE LOGICAL FRAMEWORK APPROACH	57
5.1.1	Background	57
5.1.2	What is it?	57
5.1.3	Link to the project cycle and key PCM documents	58
5.1.4	Practical issues in applying the Logframe Approach	58
5.1.5	Two main stages	60
5.2	THE ANALYSIS STAGE	61
5.2.1	Preparatory analysis	61
5.2.2	Stakeholder Analysis	61
5.2.3	Problem Analysis	67
5.2.4	Analysis of Objectives	69
5.2.5	Analysis of Strategies	70
5.3	THE PLANNING STAGE	71
5.3.1	The Matrix format, terminology and the process of preparation	71
5.3.2	First Column: Intervention Logic	74
5.3.3	Fourth Column: Assumptions	78
5.3.4	Second and third columns: Indicators and Source of Verification	80
5.3.5	Completing the draft Logframe matrix	84
5.4	ACTIVITY, RESOURCE AND COST SCHEDULES	85
5.4.1	Overview	85
5.4.2	A Checklist for Preparing an Activity Schedule	86
5.4.3	Preparing resource and cost schedules	90
5.5	USING THE LFA DURING FORMULATION, IMPLEMENTATION, EVALUATION AND AUDIT	92
5.6	A NOTE ON INTERLOCKING OR 'NESTED' LOGFRAMES	94



ANALYSIS PHASE

- ↓ **Stakeholder analysis** - identifying & characterising potential major stakeholders; assessing their capacity
- ↓ **Problem analysis** - identifying key problems, constraints & opportunities; determining cause & effect relationships
- ↓ **Objective analysis** - developing solutions from the identified problems; identifying means to end relationships
- ↓ **Strategy analysis** - identifying different strategies to achieve solutions; selecting most appropriate strategy.

★ 1. Stakeholder Matrix

★ 2. Problem tree

★ 3. Objective tree

★ 4. Choice of Strategy

PLANNING PHASE

- ↓ **Developing Logical Framework matrix** - defining project structure, testing its internal logic & risks, formulating measurable indicators of success
- ↓ **Activity scheduling** - determining the sequence and dependency of activities; estimating their duration, and assigning responsibility
- ↓ **Resource scheduling** - from the activity schedule, developing input schedules and a budget

- ★ **5. Logical Framework Matrix**
- ★ **6. Action Plan (Gantt Diagram)**
- ★ **7. Provisional Budget**

ANALYSIS PHASE

↓ **Stakeholder analysis** - identifying & characterising potential major stakeholders; assessing their capacity

★ 1. Stakeholder Matrix

↓ **Problem analysis** - identifying key problems, constraints & opportunities; determining cause & effect relationships

↓ **Objective analysis** - developing solutions from the identified problems; identifying means to end relationships

↓ **Strategy analysis** - identifying different strategies to achieve solutions; selecting most appropriate strategy.



Stakeholder and basic characteristics	Interests and how affected by the problem(s)	Capacity and motivation to bring about change	Possible actions to address stakeholder interests
<p>Fishing families: c.20,000 families, low income earners, small scale family businesses, organised into informal cooperatives, women actively involved in fish processing and marketing</p>	<ul style="list-style-type: none"> • Maintain and improve their means of livelihood • Pollution is affecting volume and quality of catch • Family health is suffering, particularly children and mothers 	<ul style="list-style-type: none"> • Keen interest in pollution control measures • Limited political influence given weak organizational structure 	<ul style="list-style-type: none"> • Support capacity to organize and lobby • Implement industry pollution control measures • Identify/develop alternative income sources for women and men
<p>Industry X: Large scale industrial operation, poorly regulated and no-unions, influential lobby group, poor environmental record</p>	<ul style="list-style-type: none"> • Maintain/increase profits • Some concern about public image • Concern about costs if environmental regulations enforced 	<ul style="list-style-type: none"> • Have financial and technical resources to employ new cleaner technologies • Limited current motivation to change 	<ul style="list-style-type: none"> • Raise their awareness of social and environmental impact • Mobilise political pressure to influence industry behaviour • Strengthen and enforce environmental laws
<p>Households: c.150,000 households discharge waste and waste water into river, also source some drinking water and eat fish from the river</p>	<ul style="list-style-type: none"> • Aware of industrial pollution and impact on water quality • Want to dispose of own waste away from the household • Want access to clean water 	<ul style="list-style-type: none"> • Limited understanding of the health impact of their own waste/ waste water disposal • Potential to lobby government bodies more effectively • Appear willing to pay for improved waste management services 	<ul style="list-style-type: none"> • Raise awareness of households as to implications of their own waste disposal practices • Work with communities and local government on addressing water and sanitation issues
<p>Environmental protection agency: Etc</p>	<p>etc</p>	<p>etc</p>	<p>etc</p>

WELCOME TO EUROPE @WELCOMETOEUROPE

ANALYSIS PHASE

↓ **Stakeholder analysis** - identifying & characterising potential major stakeholders; assessing their capacity

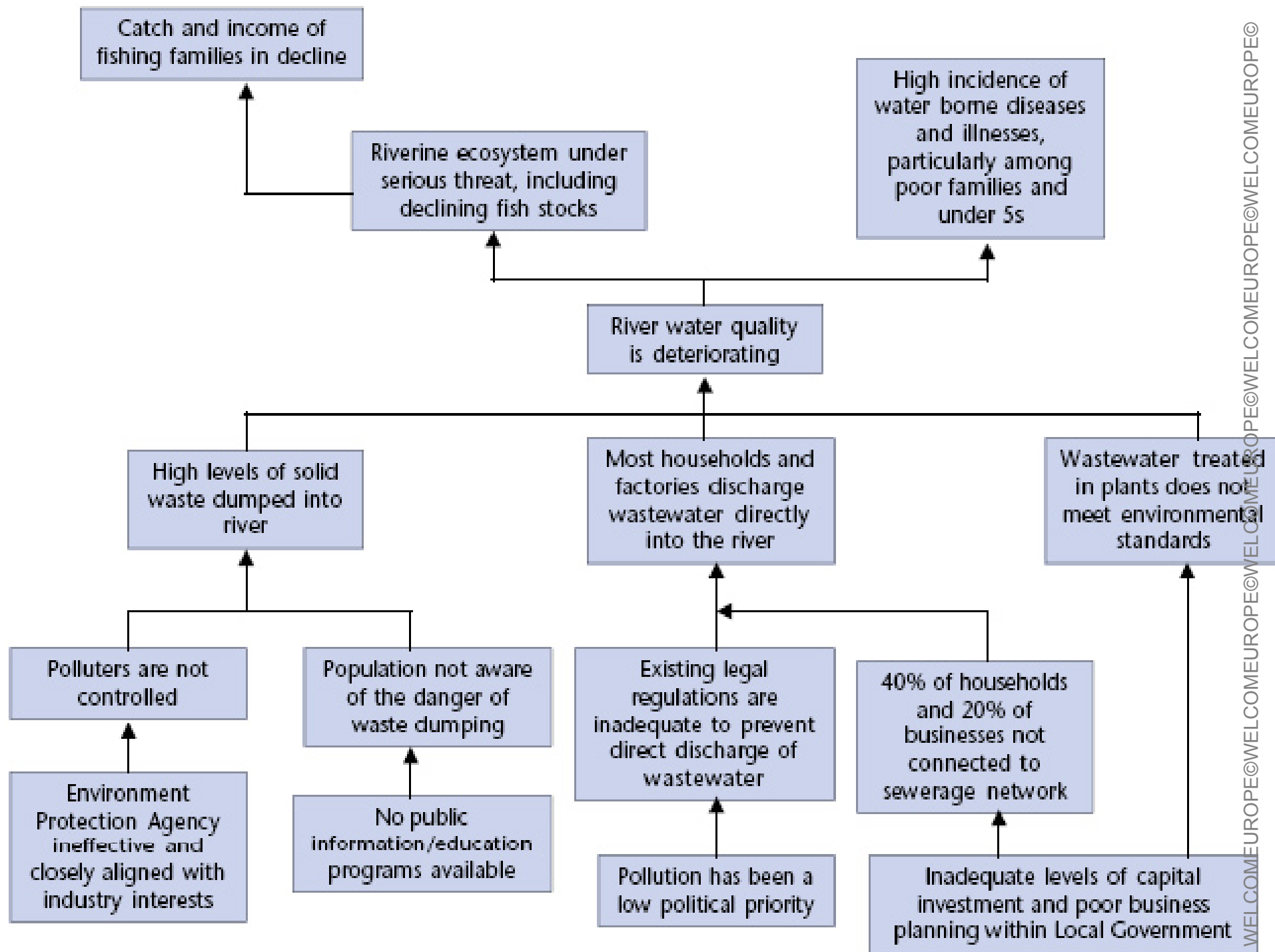
★ **1. Stakeholder Board**

↓ **Problem analysis** - identifying key problems, constraints & opportunities; determining cause & effect relationships

★ **2. Problem tree**

↓ **Objective analysis** - developing solutions from the identified problems; identifying means to end relationships

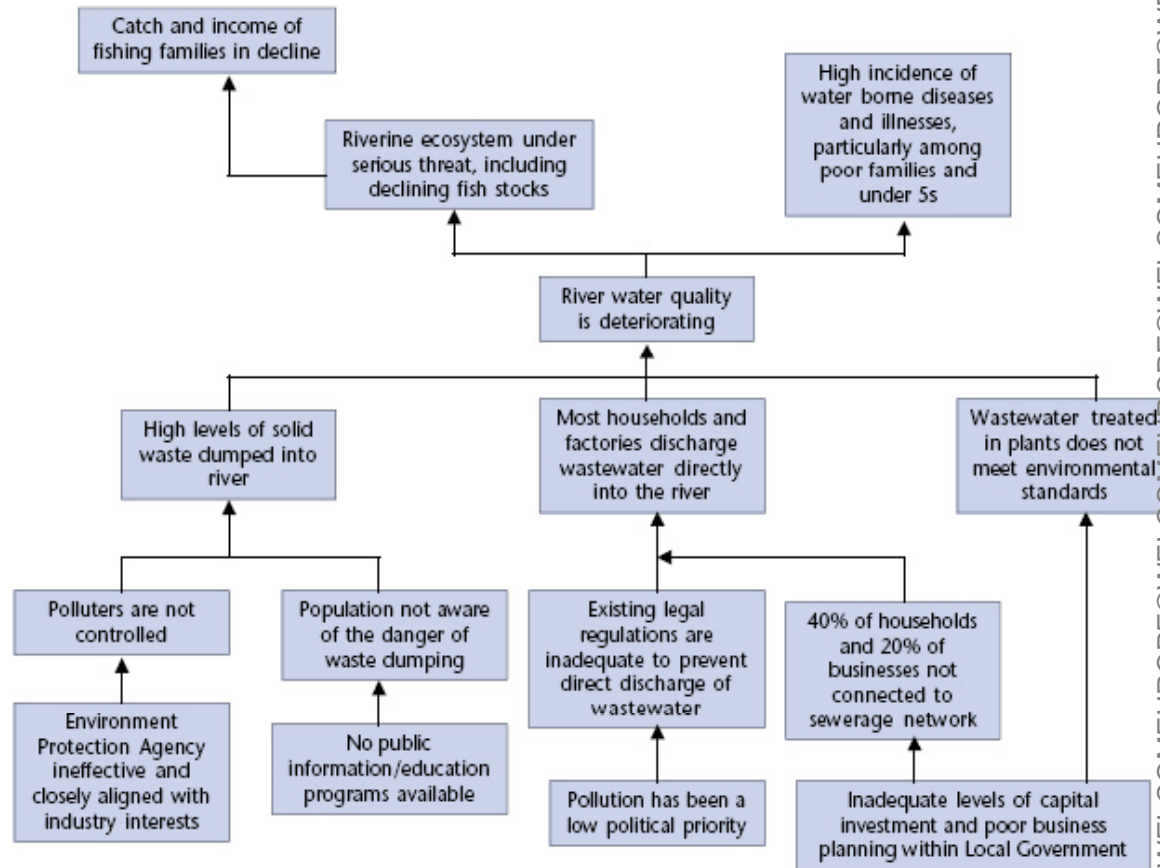
↓ **Strategy analysis** - identifying different strategies to achieve solutions; selecting most appropriate strategy.



Exercise: Elaboration of a problem tree



Based on a given problematic, please identify all the problems, causes and consequences. Organise the identified elements as explained...



ANALYSIS PHASE

↓ **Stakeholder analysis** - identifying & characterising potential major stakeholders; assessing their capacity

↓ **Problem analysis** - identifying key problems, constraints & opportunities; determining cause & effect relationships

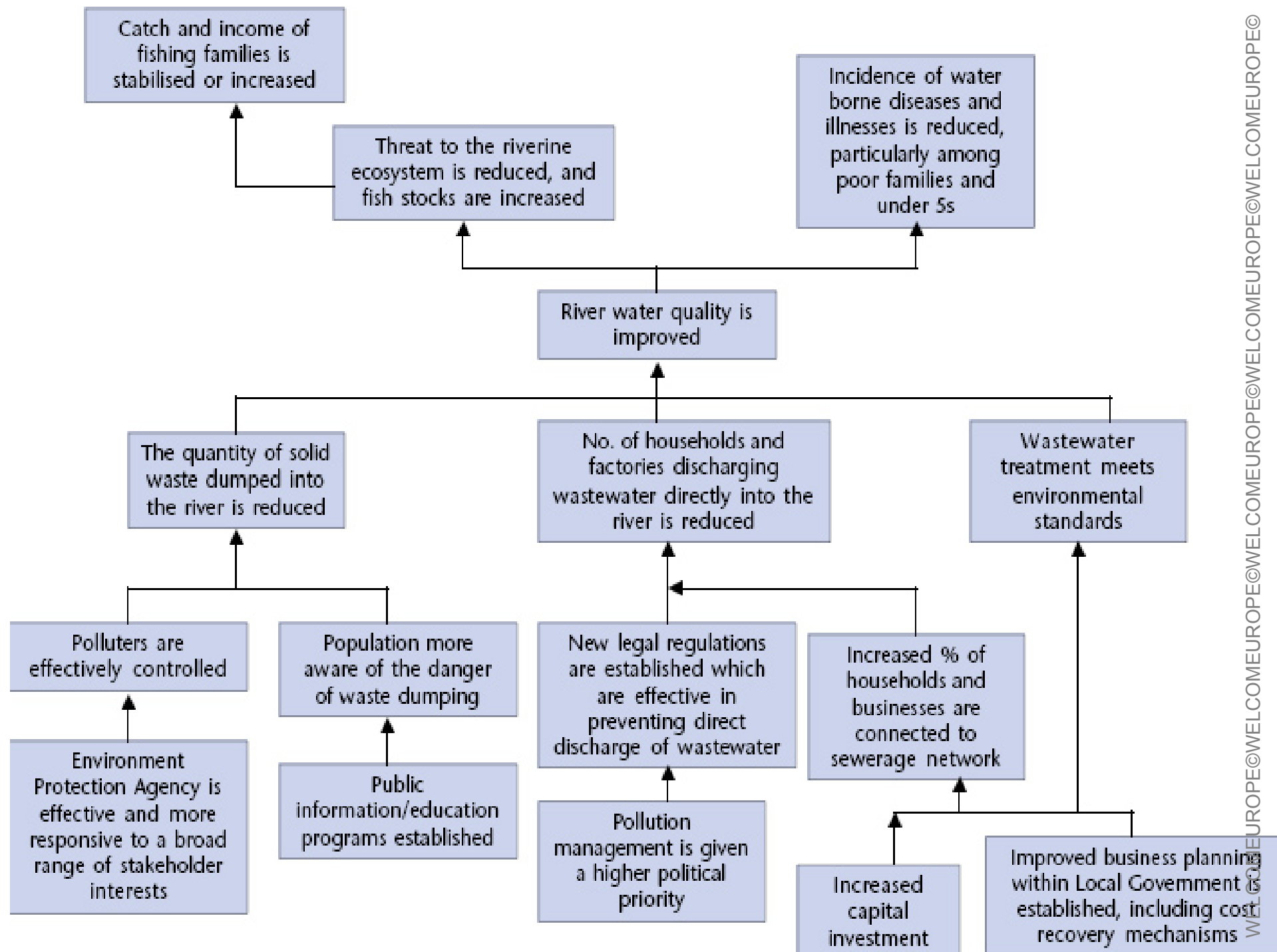
↓ **Objective analysis** - developing solutions from the identified problems; identifying means to end relationships

↓ **Strategy analysis** - identifying different strategies to achieve solutions; selecting most appropriate strategy.

★ **1. Stakeholder Board**

★ **2. Problem tree**

★ **3. Objective tree**



Exercise: Elaboration of an objective tree



- 1. Referring to the instruction and based on your problem tree, please define your objective tree and distinguish between your overall objective, specific objective and the results*
- 2. Define the related activities and the means/costs needed.*

ANALYSIS PHASE

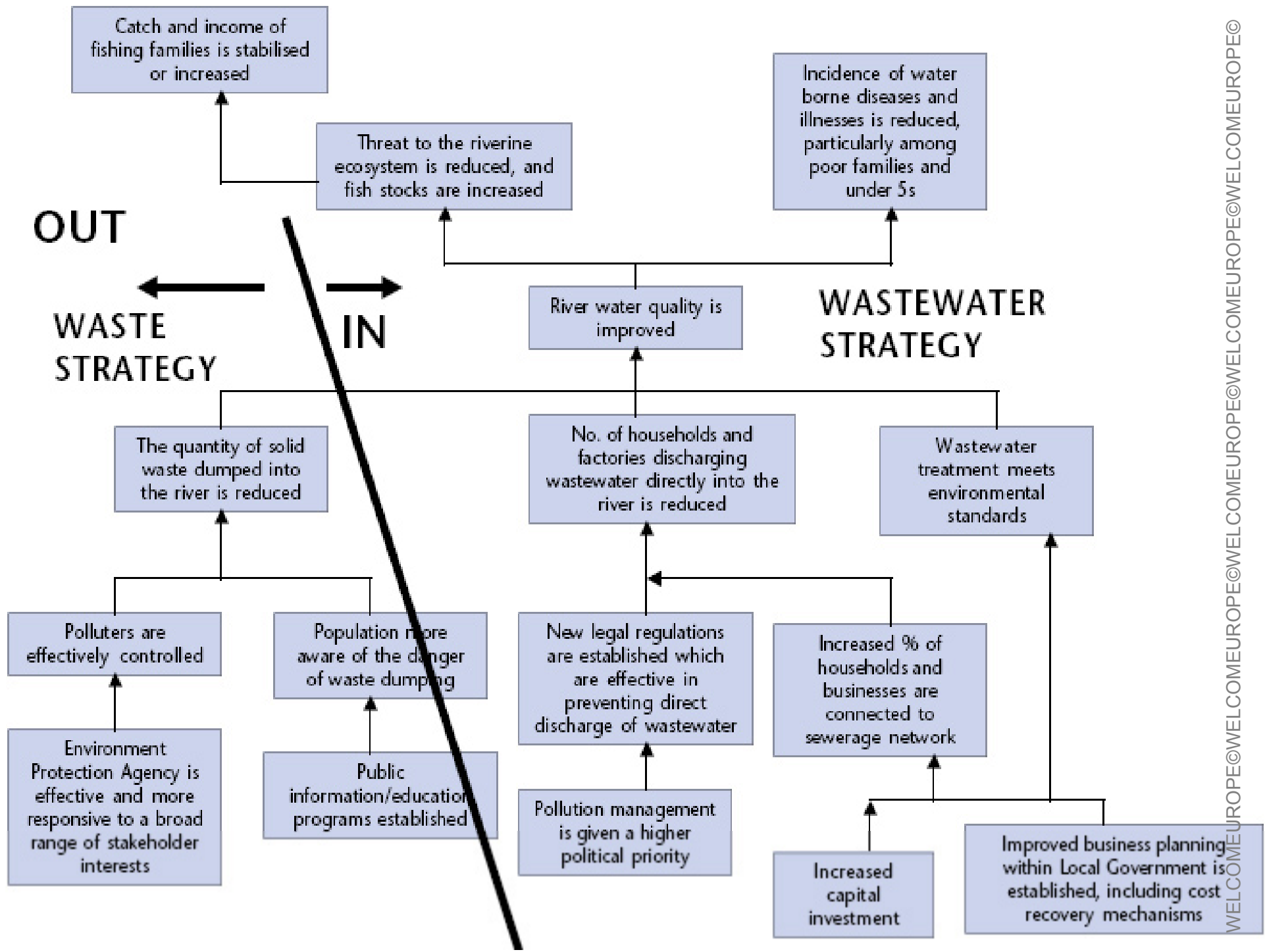
- ↓ **Stakeholder analysis** - identifying & characterising potential major stakeholders; assessing their capacity
- ↓ **Problem analysis** - identifying key problems, constraints & opportunities; determining cause & effect relationships
- ↓ **Objective analysis** - developing solutions from the identified problems; identifying means to end relationships
- ↓ **Strategy analysis** - identifying different strategies to achieve solutions; selecting most appropriate strategy.

★ **1. Stakeholder Board**

★ **2. Problem tree**

★ **3. Objective tree**

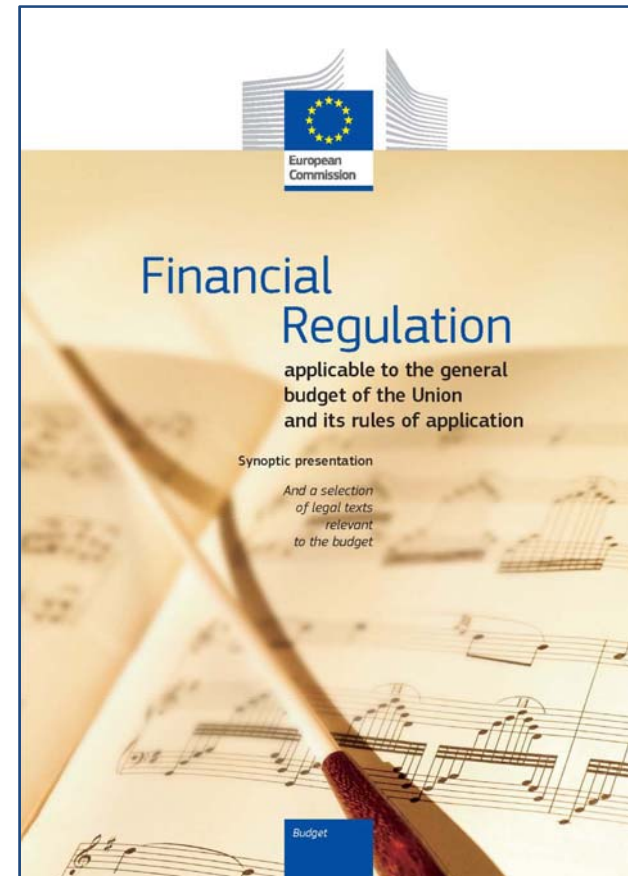
★ **4. Choice of Strategy**



Mastering budget principles and rules

- **Legal sources: Financial Regulation (title VI) and its implementing rules (available on the DG Budget website)**

http://ec.europa.eu/budget/biblio/documents/regulations/regulations_en.cfm



Rules and principles



- **Consistent**
- **Balanced**
- **In line with financial conditions, rate of co-financing, matching funds, allowable costs, etc.**
- **Analytical approach: dissociate project budget from organization budget**

SPECIFIC RULES AND PRINCIPLES

Right and citizenship programme –

VAT inquiry : *If the applicant or one of the partners is a public entity, it should be identify in the sheet Forecast Budget as VAT is not eligible for public authorities.*

Subcontracting : *the tasks that will be subcontracted need to be clearly identified and duly explained- reasons for the lack of the relevant expertise within the Partnership.*

The estimated costs of the subcontracting are clearly identifiable in the estimated budget.

SPECIFIC RULES AND PRINCIPLES

ERASMUS + programme –

Budgeting: *This programme combines unit cost and real costs on the budget chapters.*

For example: Unit cost for a teacher/trainer/ technician + Staff cost < 40% of the total budget

Idem for mobility cost - For travel distances between 100 and 499 KM: 180 EUR per participant

SPECIFIC RULES AND PRINCIPLES

Structural funds –

Depending on the countries, the rules are not the same.

For example, in France, contribution in kind is eligible on the ESF. However, the applicant need to bring forward proven documents.

For project under 50 000 €, the application of flat rate calculation is compulsory.

EIDRH -

Application of contingency reserve – flat rate of 5% of the total budget.

1

Internal

Target groups

- Project members
- Tasks leaders



Supports

- Newsletter
- On-line collaborative space
- Workshops, seminars
- Twitter
- Facebook



Thanks for your attention and be
successful in your projects !

38 rue Léon, 75018 Paris
Tel : +33 (0)1 42 54 60 64
Fax : +33 (0) 1 42 54 70 04

Melissa Moothoo
mmoothoo@welcomeurope.com

www.welcomeurope.com