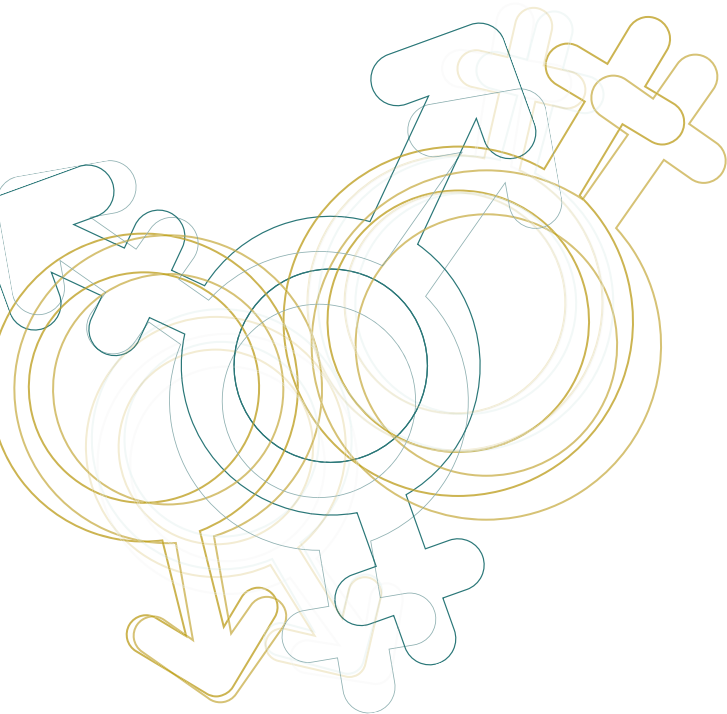


## PRACTICAL INFORMATION

The morning session and the plenary debate will take place in the **Storck** conference room. Simultaneous translation Dutch-French-English will be provided.

The workshops will take place in the conference rooms **Laermans**, **Marissiaux** and **Masereel**. The workshops 'Labour market' and 'Health care' will have Dutch-French translation; the workshop on 'Legal aspects' will be translated into Dutch, French and English.



## ACCESSIBILITY

### Access to the building Eurostation II

(FPS Employment, Labour and Social Dialogue – Institute for the equality of women and men)

The main entrance of the building is situated in the 'rue Ernest Blerot' (at the junction of the 'Place Horta' and the 'rue Bara'). Visitors are requested to check-in at the reception desk.

**If you travel by train:** Get off at the South Station. In the main arrivals hall, follow the direction 'Place Horta'. The building is situated just opposite to that exit.

**If you travel by tube (Metro):** Take metropolitan lines 2 or 6. Get off the train at 'Gare du Midi / Zuidstation' and follow the direction 'Tour du Midi / Zuidertoren'. The building is situated in the vicinity of that exit. You can also cross the South Station arrivals hall and take the exit to 'Place Horta'. The building is situated just opposite to that exit

**If you travel by bus:** The 'STIB' bus routes 27, 49, 50 and 78 serve the 'Gare du Midi / Zuidstation'. The 'De Lijn' bus routes HL, 116, 117, 118, 134, 136, 137 and 144 also serve the 'Gare du Midi / Zuidstation' (Avenue Paul Henry Spaak). And finally, the 'TEC' bus routes W, WI, 123 and 365A serve the avenue Fonsny in the vicinity of the 'Gare du Midi / Zuidstation' too.

**If you travel by tram:** Tram routes 4, 23, 32, 55, 56, 81 and 82 stop at the 'rue couverte' or in the underground tube station. In all cases follow the direction 'Tour du Midi / Zuidstation' or 'Place Horta' in order to reach the building.

**If you travel by car:** On the city inner circular road (the so-called 'petite ceinture'), follow the direction 'Gare du Midi / Zuidstation'. You can find an underground 'Q-Park' car park adjacent to the building.

**Access for disabled people:** The building Eurostation II is accessible for disabled persons. Coming from the 'Place Horta' or the 'rue Bara', wheelchair users can gain access to the building by means of a smooth slope. The personnel at the check-in desk will do whatever is required for accompanying if necessary the disabled persons.

**Institute for the equality of women and men**  
Rue Ernest Blerot 1 - 1070 Brussels

**Tel. :** +32 (0)2 233 42 65 - **Fax :** +32 (0)2 233 40 32

**E-mail :** [egalite.hommesfemmes@iefh.belgique.be](mailto:egalite.hommesfemmes@iefh.belgique.be)

**Website :** [www.iefh.belgium.be](http://www.iefh.belgium.be)

# Living as a transgender in Belgium

## Mapping the social and judicial situation of transgender people

Friday 20 November 2009 [ 9:00 > 17:00 ]

Institute for the equality of women and men  
Rue Ernest Blerot 1 - 1070 Brussels

# PROGRAMME

Already in 1989 the European Parliament and the Council of Europe called upon their member states to provide suitable legislation to put an end to the unequal treatment and discrimination against transsexual persons. Twenty years later it seems little has been achieved in this field, as in 2009 the Human Rights Commissioner of the Council of Europe again denounced transphobia and the discrimination of transgender persons.

In Belgium a number of bills were recently enacted to improve the situation of transgender persons: the law of 10 May 2007 on transsexual-ity and the law of 10 May 2007 with a view to combat discrimination between women and men. However, the complaints received by the Institute for the equality of women of men show that unequal treatment of and discriminations against transvestites, transgender and transsexual persons often occur in Belgium. The current policy and legislation do thus provide only a limited protection of the rights of this very diverse group.

As a result, the Institute for the equality of women and men has ordered a study into the social and judicial status of transgender persons in Belgium, with a view to chart the discriminations and inequalities in practice, policy and legislation in order to combat them in a specific manner. The study was carried out by the Policy Research Centre for Equal Opportunities (University of Antwerp - Hasselt University), in cooperation with Cap-Sciences Humaines, nonprofit organisation (Université Catholique de Louvain). At this seminar the study will be made public.

During the morning session the results of the study are presented by the research team. Prof. Dr. Stephen Whittle, an internationally renowned researcher in the field of transgender studies and trans activist, will elaborate more on the social and legal situation of trans people in Europe. In the afternoon the most important difficulties revealed by the study will be treated more profoundly in three workshops on 'labour market', 'health care' and 'legal aspects' respectively. By means of a debate between the invited experts and the public we would like to work on awareness-building and sensitization on the one hand, and formulate courses for action and recommendations to improve the social and legal position of transgender persons on the other. The seminar will be closed by a debate with policy-makers, academics and key players from the field.

## 9:00 Reception

## 9:30 Introduction

**Michel Pasteel**, Director of the Institute for the equality of women and men

## 9:45 The social and legal situation of trans people in Belgium: research results

**Joz Motmans**, Policy Research Centre for Equal Opportunities (University of Antwerp – Hasselt University)

## 10:30 Coffee break

## 10:50 An overview of the social and legal position of trans people within the European Union

**Prof. Dr. Stephen Whittle**, Manchester Metropolitan University, Vice-president Press for Change

## 11:30 Questions-Answers

## 12:00 Lunch

## 13:00 Workshops

### Workshop 1: Labour market

**Patricia Biard**, In charge of 'Women' and 'Gender equality' at the CSC (Belgium's Confederation of Christian Trade Unions)

**Solange Theys**, Tweestrijd, nonprofit organisation

**Marie-Christine Vrijens**, Association Trans-Action

**Drs. Thomas W. Wormgoor**, Jurist and psychologist, Transgender Netwerk Nederland

*Chair*: **Eveline Cortier**, Vrouwen Overleg Komitee

### Workshop 2: Health care

**Yves Aerts**, Co-ordinator Cavariva

**Frédéric Burdot**, Psychologist, Service de Psychiatrie et de Psychologie Médicale, Centre Hospitalier Universitaire, Liège

**Fran Bambust**, T-werkgroep

**Dr. Griet De Cuyper**, Centrum voor seksuologie en genderproblematiek, UZ Gent

**N.C. Nicholls**, Genres Pluriels, nonprofit organisation

*Chair*: **Jochen van der Worp**, Co-ordinator Rainbowhouse, Brussels

### Workshop 3: Legal aspects

**Silvan Agius**, Policy & programmes officer, ILGA-Europe  
**Stephanie Grisard**, Attaché at the FPS Justice, DG Legislation and Fundamental Rights and Liberties, Human Rights Service

**Laurence Ngosso**, Genres Pluriels, nonprofit organisation

**Prof. Dr. Stephen Whittle**, Manchester Metropolitan University, Vice-president Press for Change

*Chair*: **Patrick Verraes**, Jurist Institute for the equality of women and men

## 15:00 Coffee break

## 15:15 Presentation of the results of the workshops

## 15:30 Debate

**Véronique Claus**, President of the T-werkgroep

**Zoé Genot**, Member of Federal Parliament

**Max Nisol**, Genres Pluriels, nonprofit organisation

**Prof. Dr. Kristof Uytterhoeven**, Hogeschool voor Wetenschap & Kunst Sint-Lucas / K.U.Leuven / Lawyer

*Chair*: **Anke Hintjens**

## 16:30 Conclusions

**Joëlle Milquet**, Deputy Prime Minister and Minister of Employment and Equal Opportunities, in charge of Migration and Asylum Policy